

# ReEssence™

## CELLULITE SUPPORT

Nutritional Supplement  
60, 120 Capsules



### Purpose of Formula

ReEssence powerfully combats cellulite in these 4 areas:

#### 1. Fat

Supports healthy metabolism & the conversion of fat into energy.

#### 2. Connective Tissue

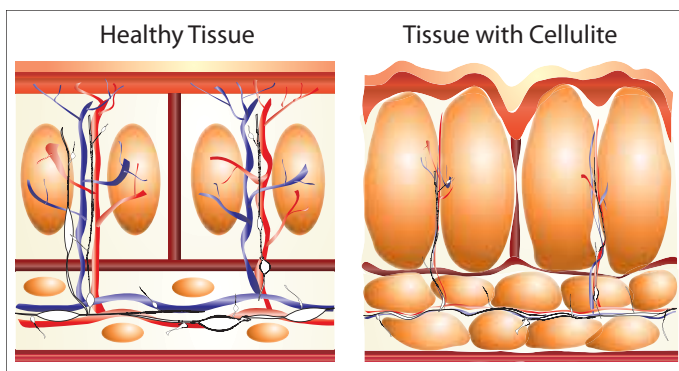
Promotes re-growth of healthy, supple connective tissue.

#### 3. Circulation

Helps tone and strengthen blood vessels and increase microcirculation.

#### 4. Waste/Toxins

Supports & strengthens the body's natural waste removal and detoxification systems.



### Suggested Use

1 - 2 capsules twice daily, preferably with meals or a glass of water.

### FAQ

- **Can I take ReEssence to help me recover from exercise or if I sprain my ankle?** Yes. ReEssence helps form and strengthen tissue. Tissue damage recovery is therefore enhanced.
- **Can men take this product too?** Yes, even though cellulite isn't generally visible on men it is still there underneath the skin. Also, men are often in need of tissue rehab even more than women.

### Key Active Ingredients

- **Centella Asiatica** - an ancient herb that helps maintain normal circulation and connective tissue structure and function in the skin. It is reported to promote healthy fluid balance in the smallest blood vessels.
- **Butcher's Broom Extract** - contains unique compounds called ruscogenins. These compounds help protect, strengthen and tone blood vessels.
- **Bromelain** - the powerful protein digesting enzyme found in pineapple. It helps maintain healthy fluid balance in muscles and other tissues. Bromelain assists in the normal breakup of congested protein and other by-products so they can be eliminated through the blood stream and lymphatic system.
- **Milk Thistle Extract** - the best known cleansing/detox herb. It supports healthy liver function. ReEssence contains the highest quality, 80% silymarin standardized extract. It protects the liver by stimulating regeneration of new liver cells and inhibiting the passage of toxins into liver cells.
- **Capsicum frutescens** - a superb natural booster for circulation and metabolism.
- **Green Tea Extract** - promotes a healthy metabolism and the burning of fat for energy.

### Supplement Facts

Serving Size: 2 Capsules  
Servings Per Container: 60

	Amount Per Serving	% DV
Vitamin C (as ascorbic acid, plant source)	120 mg	200%
Capsicum frutescens fruit		
Pantothenic Acid (as calcium pantothenate)	20 mg	200%
Riboflavin (Vitamin B2)	13 mg	765%
Niacin (Vitamin B3)	6 mg	30%
Iodine (from Fucus vesiculosus)	57 mcg	38%
Centella Asiatica (leaf) (standardized to 20% asiaticosides)	100 mg	*
Bromelain (standardized to 2000 GDU)	250 mg	*
Lemon Bioflavonoids	100 mg	*
Milk Thistle Extract (seed) (standardized to 80% silymarin)	88 mg	*
Butcher's Broom Extract (root) (standardized to 10% ruscogenins)	50 mg	*
Capsicum frutescens (fruit) (minimum 40,000 heat units)	40 mg	*
Green Tea Extract (leaf) (std. to 95% catechins, 50% EGCG)	20 mg	*

\*Daily Value (DV) not established.

www.trielements.com · toll free 888.876.3240

These statements have not been evaluated by the food and drug administration. These products are not intended to diagnose, cure, treat, or prevent disease.